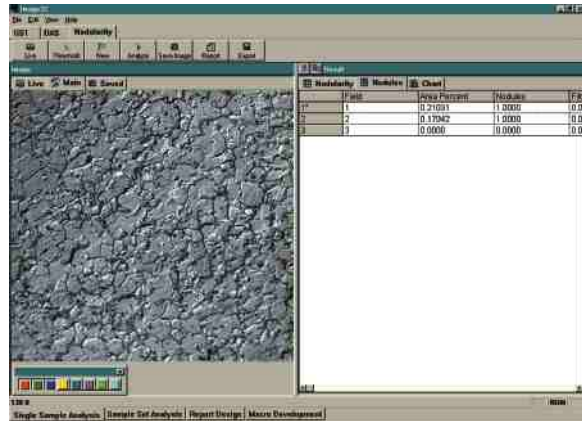


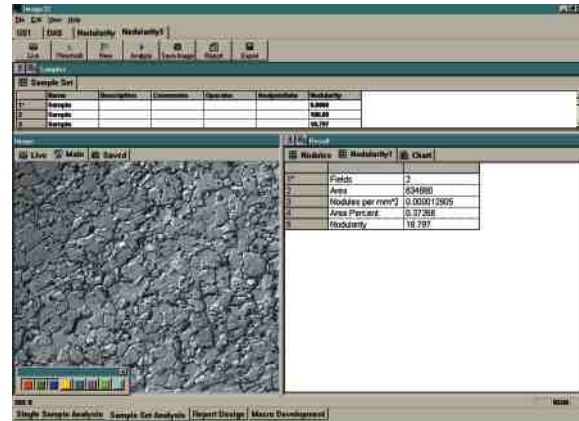
## Operational Modes

The IA32 System's software allows you to determine the right interface for your specific needs. Set up your applications for easier maneuvering within the software. Operators can work with a customized set of command buttons geared towards specific applications. Once the analysis is complete, review and print your results, or export the data to another program for further processing and archiving.



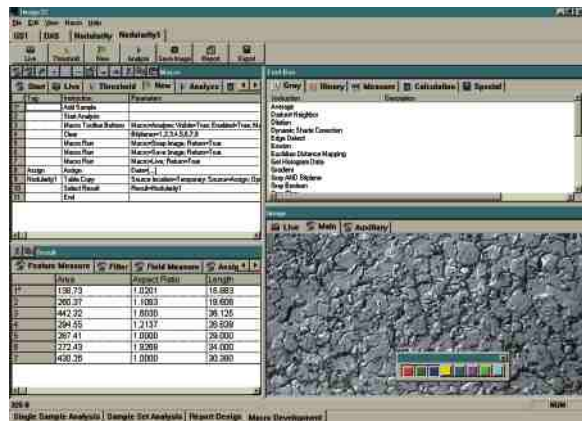
### Single Sample Analysis Mode

Access the image screen and primary results screen simultaneously.



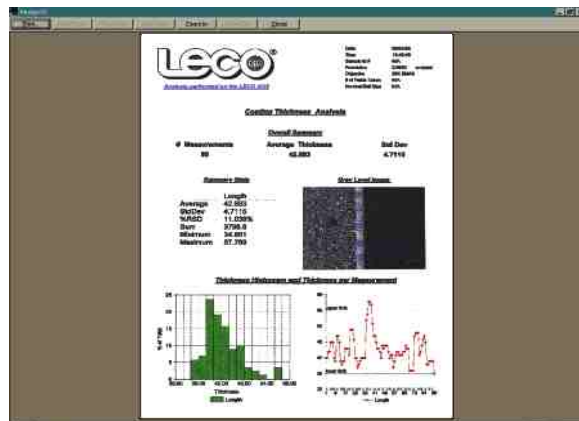
### Sample Set Analysis Mode

Use the integrated image and data compiling capabilities to save and organize information in the sample log without leaving the image and primary results screens.



### Macro Development Mode

In this mode the toolbox, instruction list, results, and image screen are all easily visible and adjustable. Advanced users may customize an existing application by simply adding additional macro buttons (instructions) or start from scratch and develop a new one.



### Report Designer Mode

This unique feature allows you to integrate images, sample information, and analysis data into one comprehensive format without leaving the analysis software. Images, tables, graphs, and even your company logo can be easily incorporated into the final report.

LECO carries a complete line of optical products to meet your laboratory production or research needs.



GX51/71 Inverted Metallurgical Microscopes



DP12 Digital Camera



LX-31 Inverted Metallurgical Microscope

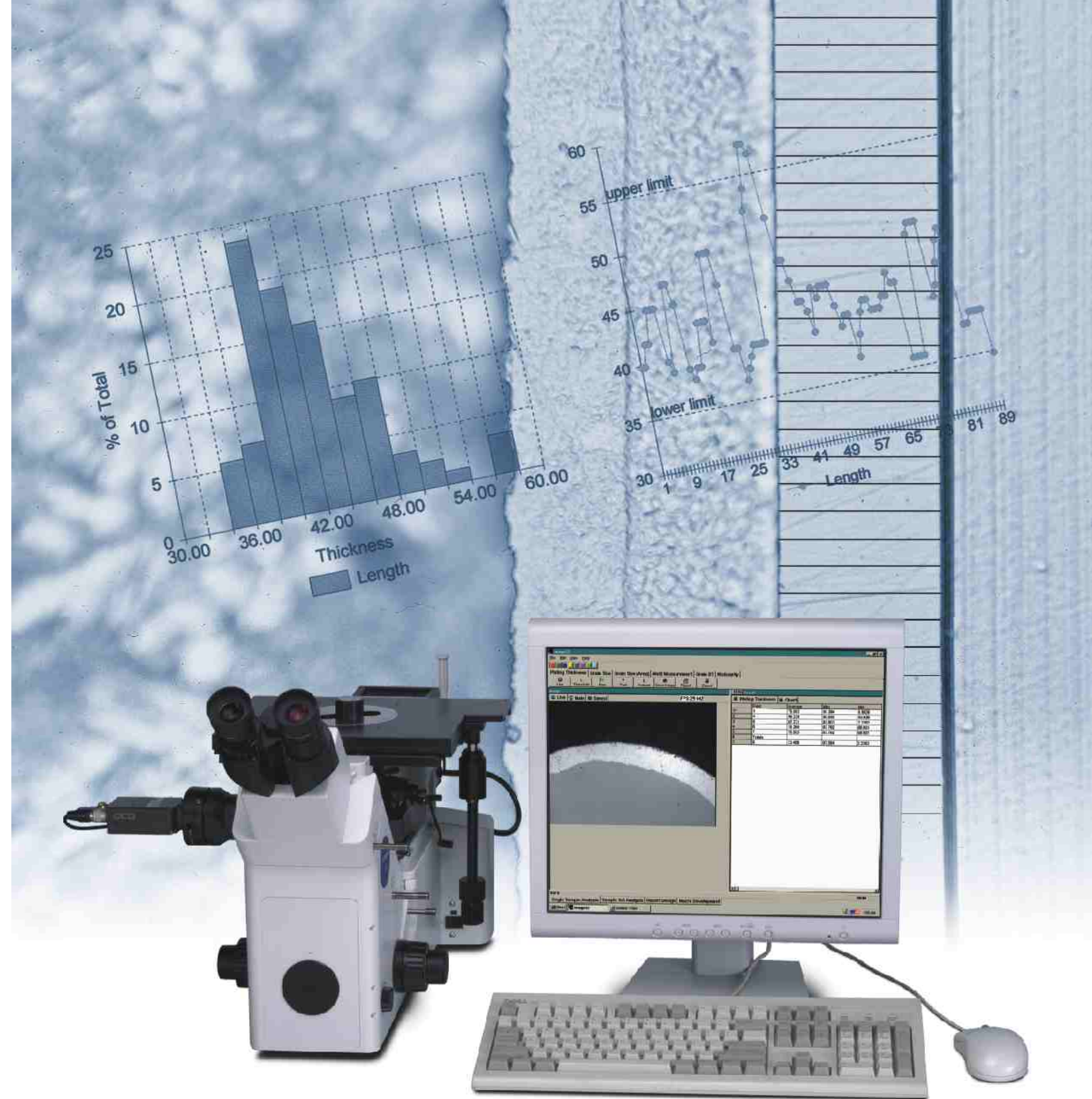


SZX-12 Zoom Stereo Microscope

LECO Corporation



3000 Lakeview Avenue • St. Joseph, MI 49085-2396 • Phone: 800-292-6141 • Fax: 269-982-8977  
info@leco.com • www.leco.com • ISO-9001 • No. FM 24045 • LECO is a registered trademark of LECO Corporation.



LECO®  
Image Analysis System



# IA32 Image Analysis System

LECO's versatile **IA32 Image Analysis System** allows you to easily transform raw data into valuable information that can be communicated with professional results. The combination of powerful analysis capabilities with point-and-click simplicity provides an ideal solution for multiple users with various levels of expertise. In as little as three clicks of the mouse you are able to analyze and print results. An easy-to-use application wizard allows you to develop advanced applications from scratch or modify pre-existing applications. Save your data or use the comprehensive report designer to effectively communicate your results with boardroom-ready reports. For added convenience, export your images to LECO's comprehensive PAX-it™ Image Management System. The LECO IA32 Image Analysis System—transforming data into results.

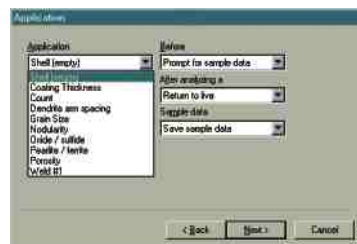
- Simple operation
- Data-rich single-sample and sample-set analysis screens
- Customizable, application-specific command buttons
- Comprehensive professional-grade report designer
- Standard CD-RW drive
- Easy-to-use application wizards



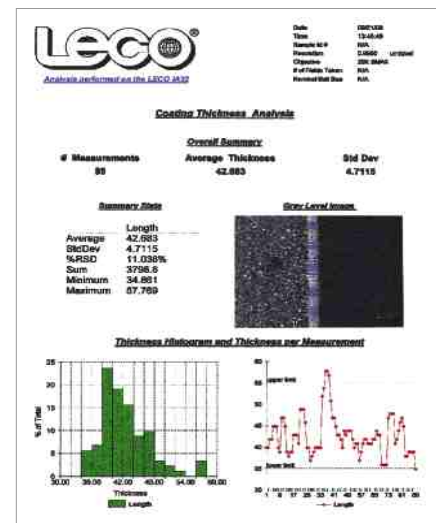
From the daily operator to the advanced metallographer, the IA32 Image Analysis System is ideally suited for all of your image analysis needs.

## Storage

Sample data can be saved and organized within the IA32 system. As your hard drive fills, you can unload from the sample log to a CD-ROM using the standard CD-RW drive. The archived sample data can be easily re-entered from the CD-ROM for quick viewing.



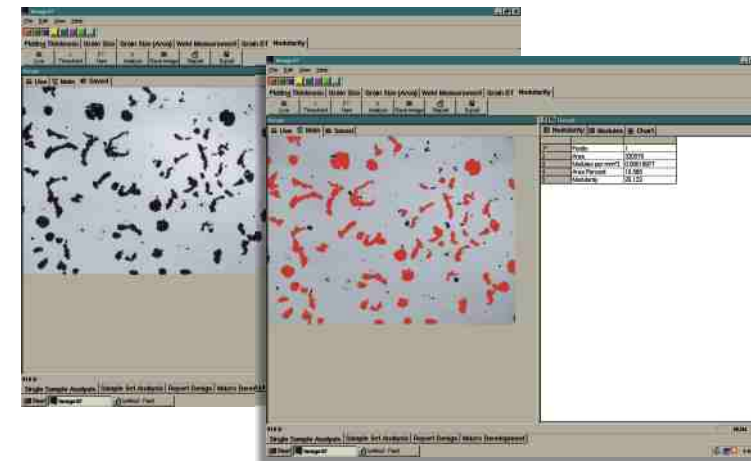
New applications are easy to set up with the wizard.



Users at every skill level can create their own reports with the customized IA32 Report Designer.

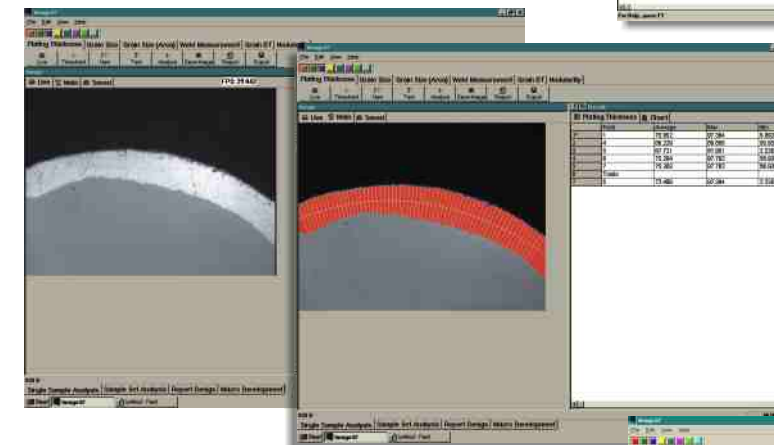
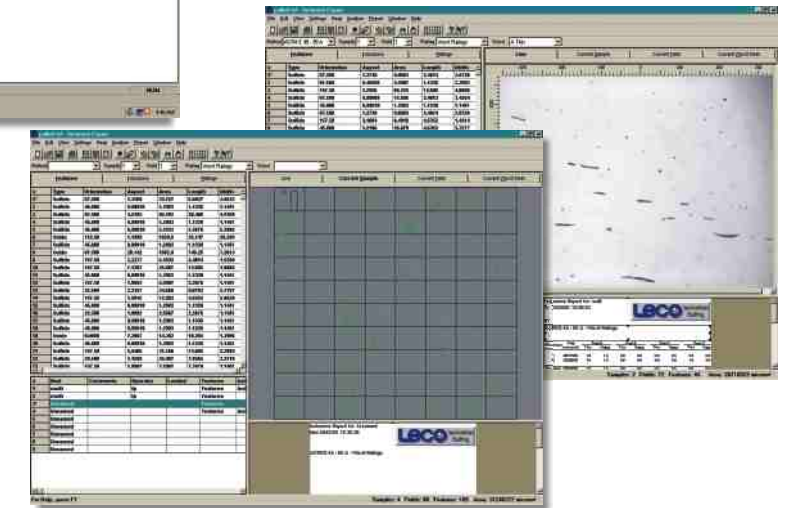
## Application Samples

Just a few applications are highlighted below. Other applications include...  
**Porosity • Area Fractions • Count • Quick Measure • Particle Size • Retained Austenite Fiber Length • Dendrite Arm Spacing (DAS) • Pearlite/Ferrite • Cast Iron • Hardness**



**Nodularity (Cast Iron)**—Nodularity is determined quickly and efficiently with a minimal level of effort and user involvement.

**Inclusions**—Inclusions in steel can be determined according to standard methods as featured in the software: ASTM (E-45, 1122, 1245), DIN (5062), Canadian Rail, JIS (G-0555), and SAE (J-422). Method customizing is also available using LECO's optional Inclusions32 Software.



**Coating Thickness**—The screens to the left show how the coating thickness is determined and that the orientation and shape are no longer critical. The application segments straight, angled, or curved coatings without any manipulation. The quick-measure feature automatically reports the size distribution.

**Grain Size**—Grain size can be determined according to ASTM E-1382. Other grain size standards are available in the IA32.

