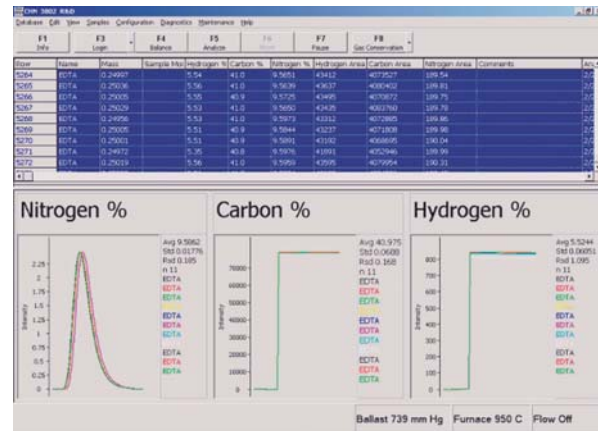
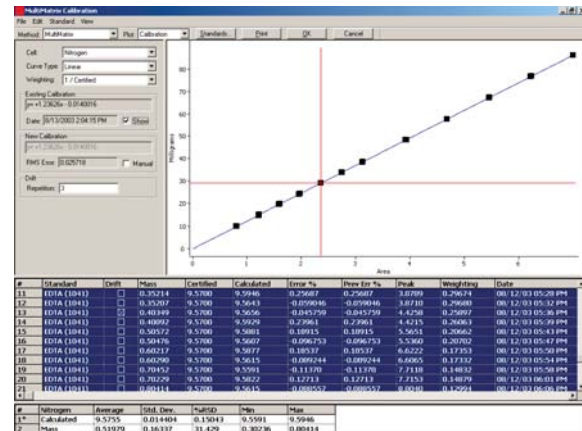


## Easy-To-Use Windows®-Based Operating Software

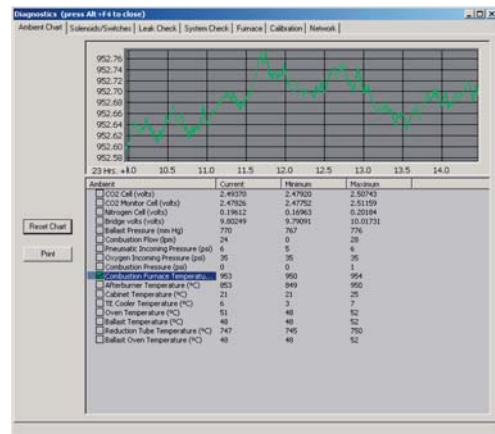
With unlimited storage space and compatibility with various Laboratory Information Management Systems (LIMS), this software is designed for seamless interaction with any operator or customer environment. A convenient on-board help manual allows you to quickly access information without leaving your instrument.



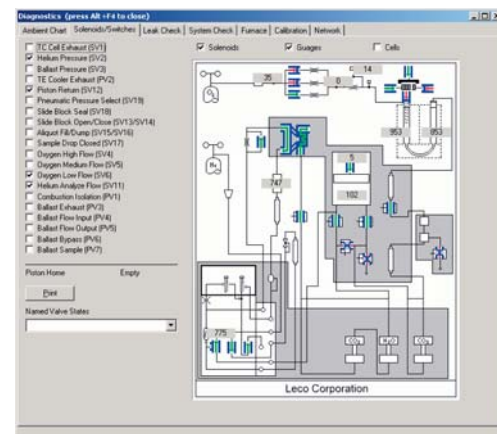
Manage data and graphs seamlessly.



Perform simple calibrations and drift corrections.



Monitor internal components during analysis.



Expanded interactive service diagnostic screens help troubleshoot problems faster and easier.

TruSpec software supports compliance to strict FDA regulations (21 CFR Part 11) for a closed analytical system.

## LECO—Your source for total analytical solutions



TGA701 Thermogravimetric Analyzer

TFE2000 Fat Determinator



LECO Corporation  
3000 Lakeview Avenue • St. Joseph, MI 49085 • Phone: 800-292-6141 • Fax: 269-982-8977  
info@leco.com • www.leco.com • ISO-9001:2000 • No. FM 24045 • LECO is a registered trademark of LECO Corporation.



Delivering the Right Results

© 2006 LECO Corporation



LECO®  
TruSpec® Series Elemental Determinators

# TruSpec<sup>®</sup> Elemental Determinator

## Designed to meet your true specifications for optimal performance.

Built on a collaboration of customer input and sound engineering, the TruSpec<sup>®</sup> Series is available in elemental configurations including N (Protein), CN, CHN, NS, CNS, CHNS, micro CHN, micro CHNS, micro CHNO, and micro CHNSO.

Incorporating newly developed hardware/software technology, and focusing on improving instrument performance and efficiency, the TruSpec Series is designed to provide you with accurate elemental determination in various organic matrices such as *foods, meats, feeds, oilseeds, plants, petfoods, milling products, soils, and fertilizers.*

### TruSpec Advantages

#### Fastest Analysis Times/Highest Sample Throughput

- Perform analyses on multiple elements in less than four minutes using independent detectors and LECO's patented ballast/aliquot system
- Free up operator time with increased autoloader capacity

#### Lowest Cost-Per-Analysis

- TruSpec's unique patented collection/detection technique minimizes overall consumable and gas usage
- No chromatographic separations or whole gas analyses required, saving you time and money
- For more information request specification sheet 209-150-002

#### Improved Robustness/Serviceability from Newly Developed Internal Components

- Improved linearity, reduced noise, and faster maintenance with easy-to-remove and inspect GENESIS modular plug-and-play detection cells
- Increased reliability, expanded diagnostics, and smaller footprint with the ECLIPSE network protocol and unique loading head

#### Aliquot Dosing System

Removes a representative sample from ballast for subsequent determination, decreasing cost-per-analysis and total analysis time.

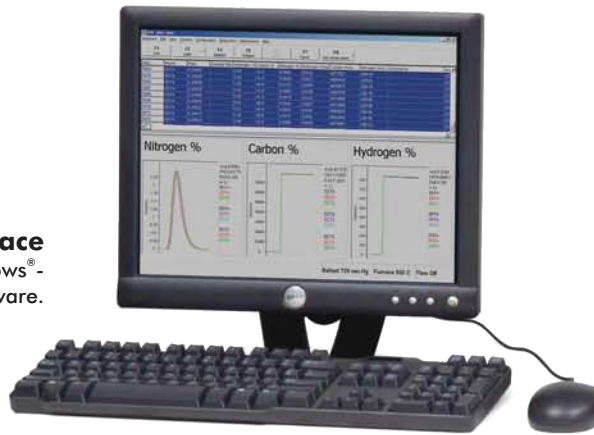


#### Stainless Steel Pre-Chiller Block and Thermoelectric Cooler

Maximizes the removal of moisture, while minimizing the use of costly moisture-removal reagents.

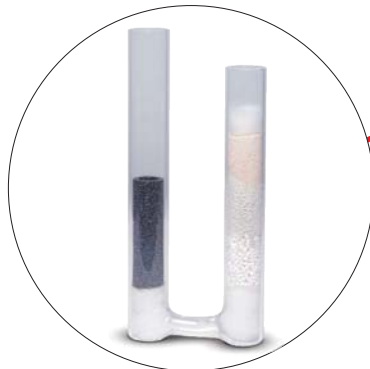
#### User Interface

Easy-to-use Windows<sup>®</sup>-based operating software.



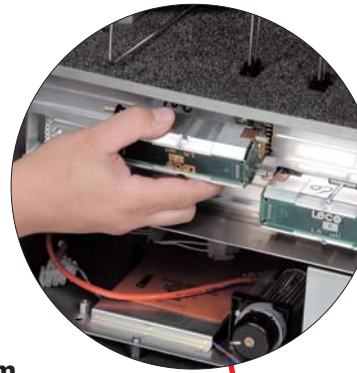
#### U-Shaped Combustion Tube

Durable quartz composition withstands temperatures up to 1050°C. Sample oxidation/ash collection takes place in the primary side of the tube, and an independent secondary (supercharged afterburner) side ensures complete sample oxidation. Porous crucibles collect large amounts of ash for long, unattended analysis.



#### GENESIS Elemental Detectors

Optimized for each element, these detectors enhance dynamic range and facilitate method development with combustion monitoring.



#### Collection System

Patented ballast collects all evolved gases, ensuring complete homogenization prior to determination.



#### Maintenance-Free Autoloader

Gravity-fed stackable carousel eliminates maintenance issues associated with mechanically operated autoloaders.



#### Loading Head

Pneumatics and electronics are integrated into one convenient, removable unit for greater reliability, faster removal, and efficient atmospheric purge.

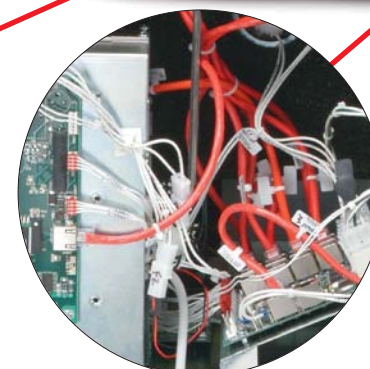
#### Optional Liquid Autosampler

Provides seamless operation for the analysis of up to 1 ml of sample from 10 ml-sized vials of liquid organic samples. For more information request specification sheet 209-150-004.



#### ECLIPSE Network Protocol

Links internal system electronics for improved reliability and serviceability. Exceeds FCC and CE requirements.



#### Optional Micro Sample Add-On Kits & Micro Oxygen Add-On Module

Increases instrument range for running micro-sized samples for various elements. For more information, request specification sheet 209-150-005.

#### Optional Sulfur Add-On Module

(Requires a TruSpec system to operate.) Provides independent sulfur capabilities in less than two minutes. An optional autoloader is available. For more information request specification sheet 209-150-003.